



Northern Lights  
Distribution  
Chicago, IL 60638

Sample 616-120324-422

Sherb Head THCA Flower

Batch/Lot # SH17922

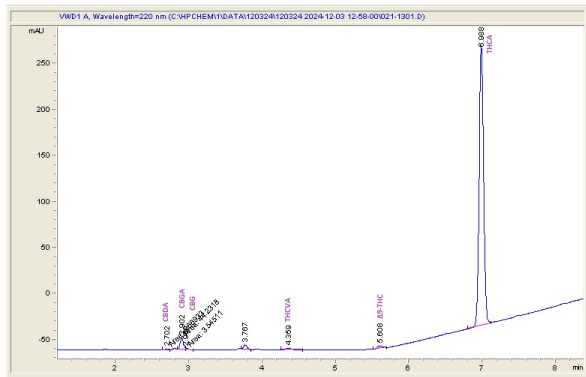
Sample Submitted: 12-03-2024; Report Date: 12-06-2024

Sherb Head THCA Flower

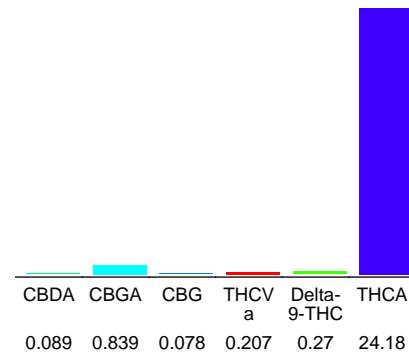
Batch/Lot # SH17922

Plant Material

### Chromatogram



### Cannabinoid Profile



### Cannabinoid Profile by HPLC

**0.27%**  
Delta-9-THC

**0.00%**  
CBD

**25.66%**  
Total Cannabinoids

Cannabinoid	% wt	mg/g
CBDA	0.089	0.89
CBGA	0.839	8.39
CBG	0.078	0.78
THCVa	0.207	2.07
Delta-9-THC	0.27	2.7
THCA	24.18	241.8
<b>Total Cannabinoids</b>	<b>25.66</b>	<b>256.6</b>
<b>Calculated Total THC</b>	<b>21.48</b>	<b>214.76</b>
<b>Calculated CBD Yield</b>	<b>0.08</b>	<b>0.78</b>

Calculated Total THC = Delta-9-THC + 0.877 \* THCA

Calculated Maximum CBD Yield = CBD + 0.877 \* CBDA

**Marin Analytics, LLC**

250 Bel Marin Keys Blvd, Suite D4  
Novato, CA 94949

833-321-TEST / info@marinanalytics.com

**Mike Clemmons**  
Lab Manager